

3. Navigation and positioning

Positioning was done with an integrated DGPS system (Racal Skyfix) interfaced with a navigation software (Thales PDS 2000).

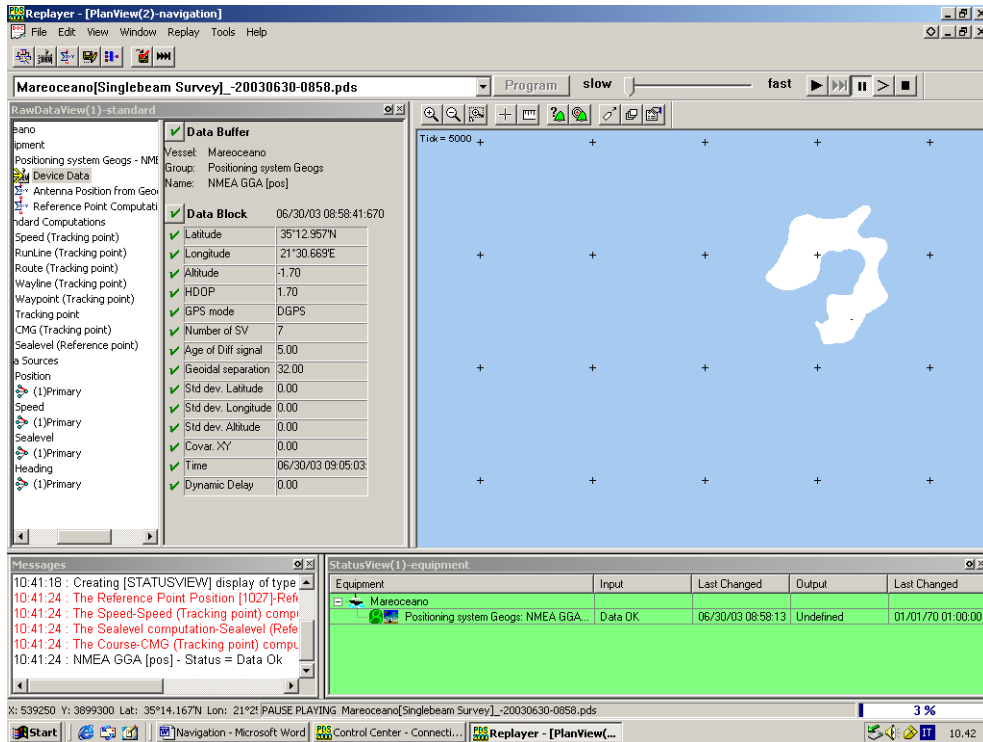


Fig. 3.1 – Replay view of the acquisition program

The PDS 2000 acquisition program is made of different windows, which show in real time numerical data (ship positioning, time, speed and bearing), a plan view of ship positioning and track, and data quality control (data flow, device functioning, number of satellites, GPS mode, GPS signal quality). Waypoints and runlines can be inserted in the program and are visualised in the plan view; numerical data can be visualised, as distance from the point and ETA.

DXF maps of the anoxic basins were loaded into the program, so as to allow an easier representation of the working areas (i.e. Urania Basin in figure 3.1).

All the data can be recorded into log files and post-processed.

The program has been used during the operations (mooring recovery and re-deployment) at the two locations.